



ANNUAL  
REPORT  
**2022**



THE UNIVERSITY OF CHICAGO

**CHAS**

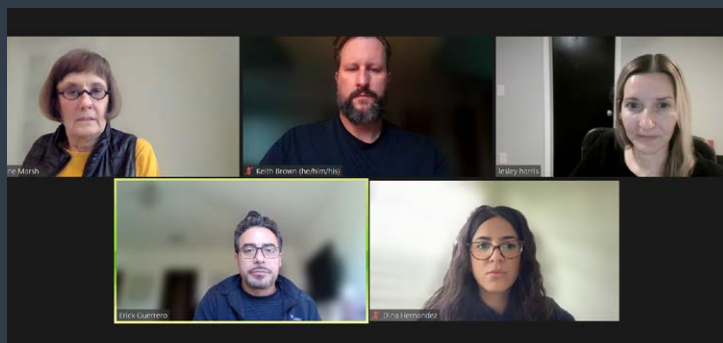
CENTER FOR HEALTH ADMINISTRATION STUDIES  
Crown Family School of Social Work, Policy, and Practice

## TABLE OF CONTENTS

LETTER FROM DIRECTORSHIP	3
ACCELERATING RESEARCH	4
SUPPORTING INTERDISCIPLINARY ALLIANCES	8
STEERING INNOVATION THROUGH KNOWLEDGE DEVELOPMENT AND DISSEMINATION	10
DIFFUSION OF HEALTH POLICY AND SERVICES	14
2022 FINANCIALS	15

Cover clockwise from top left: Harold Pollack, Professor at the Crown Family School; Colleen Grogan, Professor at the Crown Family School; Daniel Benamouzig, CNRS Research Professor of Sociology at Sciences Po; Robert Nocon, Assistant Professor at Kaiser Permanente with Jeanne Marsh, Professor at the Crown Family School.

Page 2 clockwise from top left: Salikoko Mufwene, Academic Director of the Center in Paris and Professor of Linguistics; Robert Nocon, Assistant Professor at Kaiser Permanente; Elbert Huang, Professor of Medicine and Director of the Center for Chronic Disease Research and Policy; Harold Pollack, Professor at the Crown Family School; Deborah Gorman Smith, Dean of the Crown Family School with Katherine Baicker, Provost of the University of Chicago and Professor at the Harris School; Zoom call with Gender Disparities in OpioidTx team members.





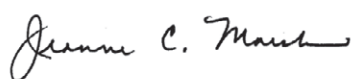
## LETTER FROM CHAS DIRECTORSHIP

The Center for Health Administration Studies (CHAS) has been a leading health policy and services research center at The University of Chicago for almost 80 years. The work of CHAS continues to build on the rich tradition described by health policy visionary and CHAS founder Odin W. Anderson: that all people should have equal access to health services regardless of financial status. The passage of the Affordable Care Act (ACA) in 2010 was a partial realization of this vision and the result of more than 50 years of research and advocacy by CHAS and numerous other research centers and institutions. The most significant health and welfare policy reform since the New Deal, the ACA has resulted in more than 20 million uninsured individuals having gained health insurance coverage. The process of reform is ongoing and remains a central topic of study for CHAS Fellows and faculty members.

Anderson's historic vision can be found in all aspects of the work of CHAS in programs supporting faculty research, promoting interdisciplinary inquiry, disseminating research, and promoting student learning at the doctoral and master's levels. CHAS-supported research enables researchers from across The University of Chicago to explore new questions, identify knowledge gaps, and translate research to policy and practice focused on health care for disadvantaged populations.

Innovative health policy and services research was supported and disseminated again this year through the CHAS Seed Grant Program, the CHAS Pre-doctoral Stipend Program, and the CHAS-sponsored Michael Davis Lecture Series. Through partnerships and co-sponsorship, CHAS supports important workshops and conferences, including the CHAS-Sciences Po Workshop in Health Policy Innovation and Reform, the Coalition for Social Work and Health, and the Chronic Disease Center's Annual Research Symposium.

An intentionally interdisciplinary health policy and services research center in a graduate school of social work is a unique institutional form that both exploits and enriches the values and orientation of The University of Chicago. We are proud that CHAS faculty members and fellows along with health policy and services researchers from across The University of Chicago and around the world to engage in and advance innovative health policy and services research. Building on its rich tradition, CHAS continues to support and advance research, disseminate knowledge, and promote learning and teaching to advance quality health care for all.



Jeanne C. Marsh, PhD, MSW  
Director



Colleen Grogan, PhD  
Co-Director



Harold Pollack, PhD  
Co-Director



# ACCELERATING RESEARCH

## 2023 CHAS FACULTY SEED GRANTS

Innovative health policy and services research is supported each year through the CHAS Seed Grant Program. The program supports interdisciplinary research projects designed to lead to larger, more complex projects. The distinction of The University of Chicago investigators and diversity of topics represented by the seed grants reflect the focus of CHAS on health access, cost, quality, behavioral health, and integrated services.

## APPLYING FOR CHAS SEED FUNDING

Do you have a new start-up research project that needs financial support to start or advance the study? CHAS seed grants are awarded to The University of Chicago faculty members for two-year durations, with July 1 start dates. The application process opens annually early spring, with committee review and funding decisions before July 1st. Junior faculty members are strongly encouraged to apply, but proposals are accepted from any appointed faculty member at The University of Chicago.

For more details on applying, please refer to the CHAS website: [chas.uchicago.edu/research/seed-grants](https://chas.uchicago.edu/research/seed-grants)

## 2022 FUNDED GRANT PROPOSALS:



### **Boaz Keysar, PhD, MA**

Department of Psychology

“How Language Use  
Influences Blood  
Donation Behavior”



### **Miwa Yasui, PhD**

Crown Family School of Social Work,  
Policy, and Practice

“Examination of the Intergenerational  
Transmission of Mental Health Beliefs  
and Help Seeking Behaviors among  
Asian Americans”



### **Alan Zarychta, PhD**

Crown Family School of Social Work,  
Policy, and Practice

“Frontline Health Workers and  
Integration of Syrian Refugees  
in Turkey”



## 2022 INTERNATIONAL HEALTH POLICY WORKSHOP

CHAS has developed a scientific exchange in the form of an international workshop series on the global transformation of health care institutions, systems, and policy. The focus of the CHAS & Sciences Po Workshops on Health Policy Innovation and Reform is to bring together, on a regular basis, health policy researchers and scholars from the U.S. and France to share - in a comparative and collaborative context - their most recent work in areas central to understanding health innovation and reform across political contexts.

In 2018, CHAS received grant funds to support the continuation of the Workshops on Health Policy Innovation and Reform, which permit The University of Chicago faculty members to meet with French researchers from Sciences Po. The France Chicago Center and the Scientific Mission of the French Consulate and the Embassy in France awarded funds to support hosting the workshop in autumn 2019 in Chicago, Illinois. In 2022, thanks to extended support by The College at the University of Chicago and the Center in Paris, CHAS hosted a post pandemic in-person workshop in Paris, France. In this fourth workshop, participants presented aspects of their work relevant to the COVID-19 pandemic. Comparisons between the United States and Europe, especially France, provided insights on similar patterns, parallels, and national specificities, including lack of leadership, radicalization of public health debates, poor preparedness, and exacerbation of health disparities.

**For more information on the workshop series, please refer to the CHAS website.**

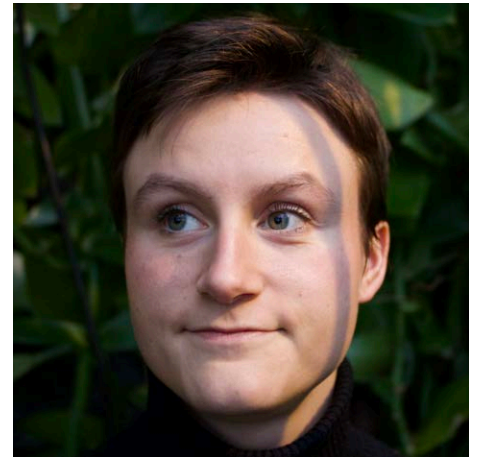


# ACCELERATING RESEARCH

## CHAS DOCTORAL STIPEND PROGRAM

Crown Family School doctoral students are encouraged to apply for a stipend to support their research in health policy and services. Each year, CHAS supports health policy and services research of PhD students through pre-doctoral stipend awards of \$3,000. The pre doctoral stipend program provides funding for Crown Family School PhD students collaborating with a faculty mentor on a health policy and services research project that is expected to result in a jointly authored publication. Recent jointly-authored projects have been published in *Journal of Substance Abuse Treatment*, *Health Affairs*, *Journal of Aging & Social Policy*, *The Milbank Quarterly*, and *Journal of Health Politics, Policy and Law*.

For more details on applying for stipend support, please refer to the CHAS website: <https://chas.uchicago.edu/research/doctoral-research-stipend-program>



**Lauren Beard**

PhD Student, Social Sciences Division

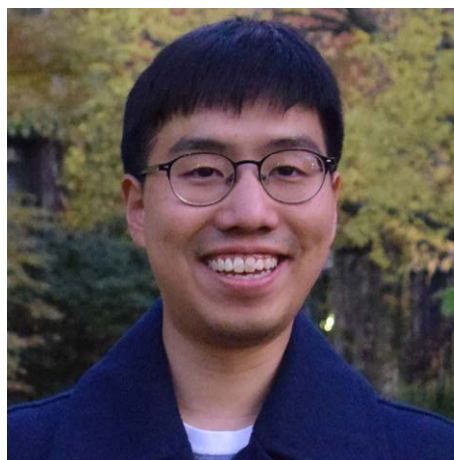
“From Institutional Care to Family Reunification in a Post-Soviet Country: Challenges and Opportunities in Restoring Child-Parent Relationships.”



**Linyun Fu, MSW**

PhD Student, Crown Family School of Social Work, Policy, and Practice

“Barriers and Facilitators to the Implementation of a School-based Mental Health Preventative Intervention for Rural Children in China”



**Eunseok Jeong, MSW**

Doctoral Student, Crown Family School of Social Work, Policy, and Practice

“How Cultural Humility Perspective Helps Understand Mental Health Service Utilization among Asian Americans”



**Caroline Kelly, AM**

PhD Student, Crown Family School of Social Work, Policy, and Practice

“How Medicaid Reimbursement Impacts the Accessibility of Mental Health Services within Chicago-Area Schools”



**Ariel Maschke, AM**

PhD Student, Crown Family School of Social Work, Policy, and Practice

“A Qualitative Study of Federal and State Agencies’ Funding Experiences for Opioid Use Disorder Services among Justice-Involved Populations”



**Melanie Nadon, MPA**

PhD Candidate, Crown Family School of Social Work, Policy, and Practice

“The Intersections of State-Level Variations in Safety-Net Generosity and Child Welfare Service Utilization for Youth Aging out of Foster Care: An Equity-Framework Analysis”



**Lauren Peterson, MPH, MA**

Doctoral Student, Crown Family School of Social Work, Policy, and Practice

“Gender Differences in Health Care Use and Spending for Medicaid Patients Diagnosed with Opioid Use Disorder (OUD) by Principal Outpatient Care Setting”



**Anne Ruelle**

Doctoral Student, Crown Family School of Social Work, Policy, and Practice

“Gang Members and Their Families: Implications for Well Being in Reintegration”



**Daniel Scott, LMSW**

PhD Student, Crown Family School of Social Work, Policy, and Practice

“No One Likes Surprises? Surprise Billing, Private Equity and the Embrittling of U.S. Health Care”



**Durrell Malik Washington, Sr., MSW**

PhD Candidate, Crown Family School of Social Work, Policy, and Practice

“Parental Incarceration and Other Influences of Legal Socialization in Urban Youth”



## SUPPORTING INTERDISCIPLINARY ALLIANCES



### CHAS FACULTY FELLOWS

Fellows at CHAS are distinguished faculty members from schools and departments across The University of Chicago, including the Pritzker School of Medicine, Department of Public Health Sciences, Booth School of Business, Harris School of Public Policy, Department of Psychology, and the Crown Family School of Social Work, Policy and Practice. CHAS Fellows are appointed by the directorship of CHAS based on their significant health policy and services research and involvement in CHAS programming. Many Fellows continually contribute their expertise to CHAS-affiliated programs, including the Michael M. Davis lecture series, the Medicaid Working Group, and CHAS-hosted workshops.



Clockwise from top left: Monica Peek, Professor for Health Justice of Medicine, with Marshall Chin, Professor of Healthcare Ethics in the Department of Medicine; Neda Laiteerapong, Associate Professor of Medicine, Psychiatry and Behavioral Neuroscience; Boaz Keysar, Professor of Psychology.



## CHAS FELLOWS

**Daniel Adelman, PhD, MSc**

Booth School of Business

**Alida Bouris, PhD, MPhil, MSW**

Crown Family School for Social Work, Policy, and Practice

**Marshall Chin, MD, MPH**

Department of Medicine

**Matthew Epperson, PhD, MSW**

Crown Family School for Social Work, Policy, and Practice

**Angela S. Garcia, PhD, MA**

Crown Family School for Social Work, Policy, and Practice

**Robert Gibbons, PhD**

Department of Public Health Sciences

**Donald Hedeker, PhD**

Department of Public Health Sciences

**Elbert Huang, MD, MPH**

Department of Medicine

**Leyla Ismayilova, PhD, MSW, MSc**

Crown Family School for Social Work, Policy, and Practice

**Waldo E. Johnson, Jr., PhD, MSW**

Crown Family School for Social Work, Policy, and Practice

**Boaz Keysar, PhD, MA**

Department of Psychology

**R. Tamara Konetzka, PhD**

Department of Public Health Sciences

**Neda Laiteerapong, MD, MS, FACP**

Department of Medicine

**Diane Lauderdale, PhD**

Department of Public Health Sciences

**Doriane Miller, MD**

Department of Medicine

**Olufunmilayo Olopade, MD**

Department of Medicine

**Sola Olopade, MD, MPH**

Department of Medicine

**Monica Peek, MD, MPH**

Department of Medicine

**Gina Samuels, PhD**

Crown Family School for Social Work, Policy, and Practice

**Prachi Sanghavi, PhD**

Department of Public Health Sciences

**John A. Schneider, PhD, MD**

Department of Public Health Sciences

**Sarah Sobotka, MD, MSCP**

Department of Pediatrics

**Julian Solway, MD**

Department of Medicine

**Debra Stulberg, MD, MAPP**

Department of Family Medicine

**Anna Volerman Beaser, MD**

Department of Medicine

**Miwa Yasui, PhD**

Crown Family School for Social Work, Policy, and Practice

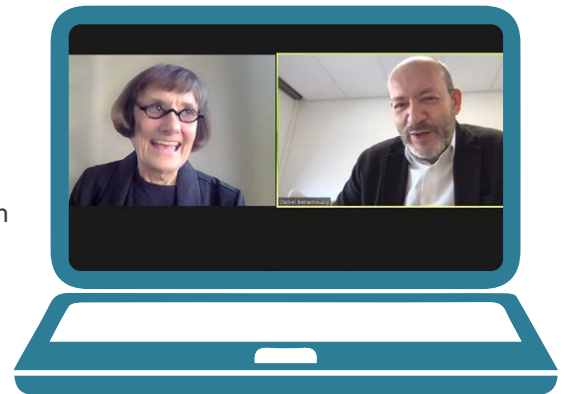
**Alan Zarychta, PhD, MA**

Crown Family School for Social Work, Policy, and Practice

# STEERING INNOVATION THROUGH KNOWLEDGE DISSEMINATION

## MICHAEL M. DAVIS LECTURES

For decades, the Michael M. Davis Lecture Series has been convening health policy and services research audiences on Tuesdays at the Crown Family School for Social Work, Policy and Practice. In 2020, when the COVID-19 pandemic first started, CHAS pivoted the lectures series' "lunch and learn" format to online webinars to continue engaging and building our academic community. In 2022, plans were implemented to bring lectures back to campus in person to continue our proud tradition of providing free educational content and disseminating the latest discoveries from interdisciplinary academic researchers. All lectures are recorded and archived on the CHAS YouTube channel for convenient viewing by those who could not attend and for classroom instruction.



Clockwise from top right: Jeanne Marsh, Professor at the Crown Family School, with Daniel Benamouzig, CNRS Research Professor of Sociology at Sciences Po; Colleen Grogan, Professor at the Crown Family School; Katherine Baicker, Provost of the University of Chicago.





### **MEDICAID WORKING GROUP (MWG)**

The Medicaid Working Group (MWG) is an interdisciplinary team of The University of Chicago health policy and services researchers, economists, political scientists, social workers, and physicians who have encouraged the building of a Centers for Medicare and Medicaid Services (CMS) data repository at The University of Chicago. With support from CHAS, Health Resources and Services Administration (HRSA) and The National Institutes of Health (NIH), the MWG continues to purchase nationally represent a Medicaid claims data, both Medicaid Analytic eXtract (MAX) files and T-MSIS Analytic Files, to conduct federally supported research grants and contracts, with several additional start-up projects annually. MWG researchers meet regularly to develop Medicaid claims data acquisition, develop infrastructure, and share knowledge of tools and strategies useful in the analysis of MAX files and TAFs. Selected topics currently under study by MWG include Medicaid Managed Care Coverage and Utilization Management of Opioid Use Disorder Treatment, Trends in the Medicaid Program after the Affordable Care Act, Health Center Financial Analysis, Health Care Utilization and Mortality Trends among Dually Eligible Users of Medicare and Medicaid.

Clockwise from top left: Marshall Chin, Professor of Healthcare Ethics in the Department of Medicine; Harold Pollack, Professor at the Crown Family School; Jeanne Marsh, Professor at the Crown Family School.

# GRADUATE PROGRAM IN HEALTH ADMINISTRATION AND POLICY (GPHAP)

CHAS supports an innovative health policy and research training program for graduate professional students at the University of Chicago. The Graduate Program in Health Administration and Policy (GPHAP) is a unique health administration program in the United States that allows students to earn a Certificate in Health Administration and Policy or a Certificate in Health Administration and Policy with a concentration in global health, while earning a degree in one of the participating University of Chicago graduate professional schools: Booth School of Business, Harris School of Public Policy, Law School, Pritzker School of Medicine, and Crown Family School for Social Work, Policy and Practice.

## APPLYING FOR GPHAP PROGRAM OF STUDY

The application deadline for master's students entering in the autumn quarter is the beginning of September annually. Applications received by the deadline will be notified mid to late September.

For more details on applying, please refer to the GPHAP website: <https://gphap.uchicago.edu/>



Director of GPHAP, Laura Botwinick, with GPHAP students, alumni, and faculty and staff from The Susan and Richard Kiphart Center for Global Health and Social Development.



## GPHAP FELLOWSHIPS

### 2022 BROWN FELLOWS

Yuki Chong, Harris  
Alice Thompson, Law  
Kaley Wendorf, Booth

### 2022 QUERN FELLOWS

Ashley Aguilar, Harris  
Arunima Bhattacharjee, Crown  
Franklin Joseph, Harris  
Cindy Turner, Harris

### 2022 ERIKSON FELLOWS

Maddy Boesche, Crown  
Hatcher Chapman, Crown  
May Chen, Harris  
Marissa Jones, Harris  
Matilde Tinezzi Martini, Harris  
Justin Mun, Crown  
Sandra Yamin, Crown

## 2022 GPHAP GRADUATES

### CROWN FAMILY SCHOOL

Ryann Billitteri  
Sabrina Geraghty  
Danny Michael  
Jahee Yi  
Rachel Zalaznik

### BOOTH

Natalie Koonce  
Julia Plottel  
Varun Rajagopalan  
Matthew Staab  
Nicole Villarreal  
Delaney Wing  
Hunter Witmer  
Jay Yarlagadda

### LAW

Anna Boardman  
Evan De Ycaza  
Kim Johnson  
Parth Patel

### PRITZKER GLOBAL HEALTH

Beverly Kyalwazi  
Christina Stiles

### CROWN GLOBAL HEALTH

Asiyah Nida Khafiyya

### HARRIS

Claire Brindley  
Rebecca Delay  
Daniel Hartman  
Jonah Klein-Barton  
Sarah Mering

Sophia Mlawer  
Alyssa Reitz  
Liz Scott  
Amit Srivastava  
Austin Gana Tolentino

# DIFFUSION OF HEALTH POLICY AND SERVICES RESEARCH

## CO-SPONSORSHIPS

The CENTER FOR HEALTH ADMINISTRATION STUDIES (CHAS) continues to support and promote collaborative centers and programs across campus. After the COVID-19 pandemic, CHAS is poised to continue supporting educational contributions and dissemination of high-impact research. In 2022, CHAS co-hosted an international workshop with Sciences Po LIEPP in Paris, France. Plans have been made for co-hosting visiting scholar presentations with Healthcare Delivery Science and Innovation (HDSI) at the UChicago Medicine medical complex and with The Susan and Richard Kiphart Center for Global Health and Social Development. CHAS sponsors and supports research conferences to bring evidence to bear on emerging trends and issues in health policy and services. These educational and training opportunities convene today's and tomorrow's leaders in preparation to operate in multiple sectors including social service, business, law, medicine, and public policy.

**SOCIAL MEDIA:** CHAS strives to utilize latest technologies to bring educational content to stakeholders and the community. This content includes latest publications, national expert observations, funding announcements, and recent promotions. Additionally, CHAS lectures and events are announced on social media channels (see below) and can be viewed live online via Zoom, with recordings archived at the CHAS YouTube channel. Please follow the CHAS accounts on social media to learn about future happenings.

**Please follow the CHAS accounts on social media to learn about future happenings:**



@CHASUChicago



@UChicagoCHAS



@CHASUChicago



## CHAS eNews:

CHAS disseminates a monthly newsletter to inform audiences on pioneering and interventional research findings discovered by CHAS-affiliated faculty members and University of Chicago doctoral research. Significant research findings from CHAS-affiliated faculty researchers are featured monthly in sections entitled "Policy Briefs" and "Service Delivery Innovations." Intended to highlight interdisciplinary research findings, the monthly eNews strives to educate and disseminate to multiple sectors of the regional and national academic research community.



October 2022  
**CHAS eNews**

### Policy Briefs

Parental Socialization of Mental Health in Chinese American Families

A 2022 study conducted by CHAS colleagues, **Miwa Yasui** (CHAS Fellow and Associate Professor at Crown Family School), **Yoonsun Choi** (Professor at Crown Family School), **Marshall Chin** (Richard Parrillo Family Distinguished Service Professor, Department of Medicine), and **Gina Samuels** (CHAS Fellow and Associate Professor at Crown Family School), explores youth-reported parental socialization of mental health within Chinese

### Upcoming Lectures

Online Autumn 2022 Michael M. Davis webinars begin next week! Click the links below to register.

10/11/2022 @ 12:30pm CDT  
**"Beating the Stigma of Behavioral Health"**  
[Patrick Corrigan, Psy.D.](#), University Distinguished Professor of Psychology  
National consortium for Stigma and Empowerment  
[Illinois Institute of Technology](#)



## 2022 FINANCIALS

	Summary Expenses	FY22 Expenses
<b>TOTAL</b>	<b>\$304,448</b>	<b>\$304,448</b>
<b>Programmatic Spending</b>	<b>\$158,000</b>	<b>\$158,000</b>
<b>Operations</b>	<b>\$146,448</b>	<b>\$146,448</b>
<b>Supporting CFS programs</b>		
CFS Seed Grants	\$72,000	\$72,000
Davis Lecture expenses	\$-	\$-
PhD Stipend Awards	\$21,000	\$21,000
CHAS-SSA Conferences/Workshops	\$-	\$-
CFS Co-sponsorships	\$-	\$-
<b>SUBTOTAL</b>	<b>\$93,000</b>	<b>\$93,000</b>
<b>Supporting UChicago</b>		
Medicaid Working Group	\$-	\$-
Non-CFS Seed Grants	\$65,000	\$65,000
Non-SSA Conferences/Workshops	\$-	\$-
Non-CFS Co-sponsorships	\$-	\$-
<b>SUBTOTAL</b>	<b>\$65,000</b>	<b>\$65,000</b>

### 2022 GOVERNANCE

#### DIRECTORS

**Jeanne C. Marsh, PhD, MSW (Director)**

Crown Family School for Social Work,  
Policy, and Practice

**Colleen Grogan, PhD (Co-Director)**

Crown Family School for Social Work,  
Policy, and Practice

**Harold Pollack, PhD (Co-Director)**

Crown Family School for Social Work, Policy,  
and Practice; Department of Public Health Sciences

**Keith E. Brown, MBA**

**(Administrative Director)**

Crown Family School for Social Work, Policy  
and Practice

#### ADVISORY COMMITTEE

**Deborah Gorman-Smith, PhD**

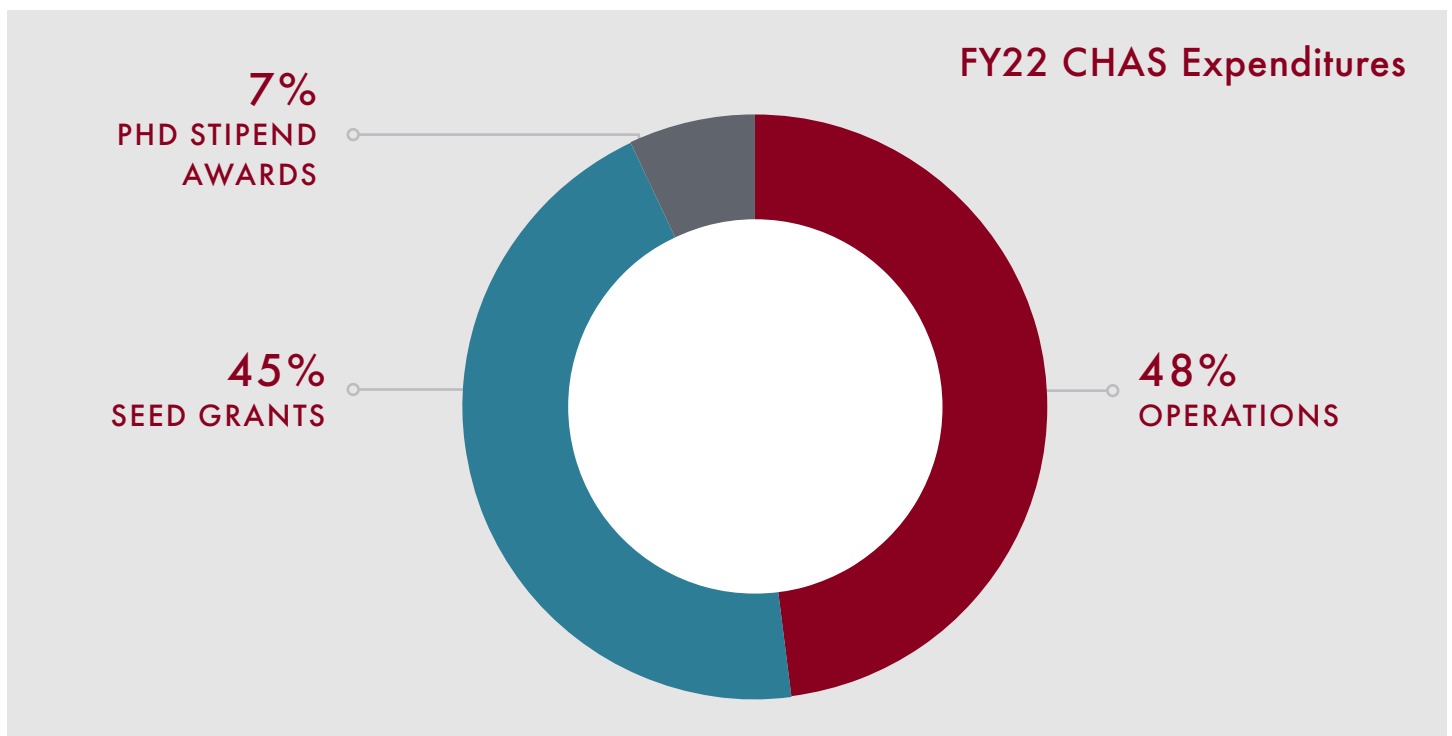
Crown Family School for Social Work,  
Policy, and Practice

**Diane Lauderdale, PhD**

Department of Public Health Sciences

**Katherine Baicker, PhD**

Harris School of Public Policy





THE UNIVERSITY OF CHICAGO

# CHAS

CENTER FOR HEALTH ADMINISTRATION STUDIES  
Crown Family School of Social Work, Policy, and Practice

969 E. 60th Street • Chicago, IL 60637 • 773.834.3058  
**[chas.uchicago.edu](http://chas.uchicago.edu)**